

MONTHLY MEMBERSHIP PROGRESS REPORT

LOCATION INDIA

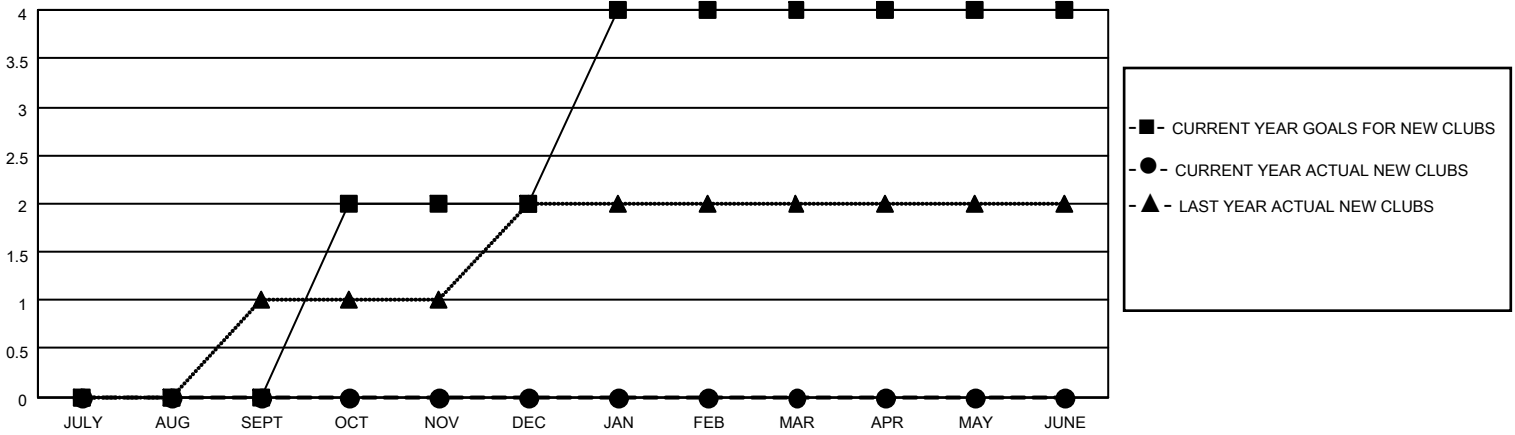
District 317 D

Results as of: 7/31/2020

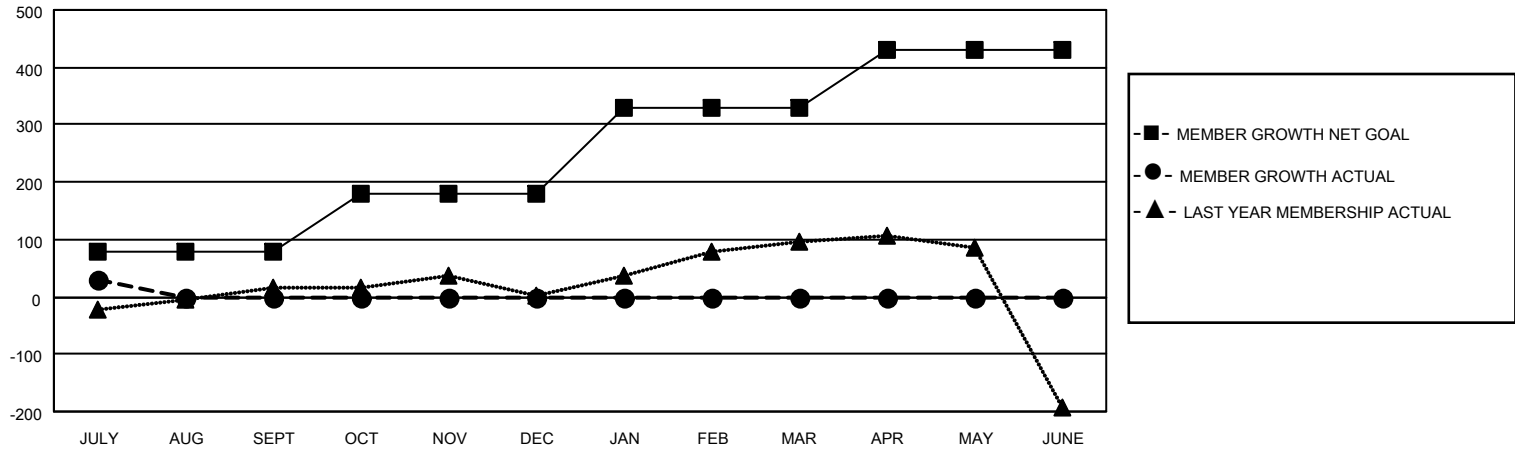
Clubs			
RESULTS FOR 2020-2021			
QUARTER	NEW CLUB GOAL	NEW CLUBS	DROPPED CLUBS
JULY/AUG/SEPT	0	0	0
OCT/NOV/DEC	2	0	0
JAN/FEB/MAR	2	0	0
APR/MAY/JUNE	0	0	0

Members			
RESULTS FOR 2020-2021			
QUARTER	MEMBER GROWTH NET GOAL	MEMBER GROWTH ACTUAL	DROPPED MEMBERS ACTUAL (including transfers)
JULY/AUG/SEPT	80	56	22
OCT/NOV/DEC	100	0	0
JAN/FEB/MAR	150	0	0
APR/MAY/JUNE	100	0	0

GOALS AND ACTUAL NEW CLUBS CUMULATIVE



GOALS AND ACTUAL MEMBERS CUMULATIVE



DROPPED CLUBS: 0	14 CLUBS OF 98 ADDED 1 OR MORE NEW MEMBERS	<u>GENDER DISTRIBUTION</u> MALE 2,910 (77.31%) FEMALE 854 (22.69%)
<u>DROPPED MEMBERS</u>	CLICK HERE FOR CUMULATIVE MEMBERSHIP DATA	TOTAL FAMILY UNIT MEMBERS 1,311
DECEASED 1		FAMILY MEMBERS PAYING HALF DUES 670
CLUB CANCELLED 0		
OTHER 21		
TOTAL 22		